



Welcome to our

2024

collection of beautiful
wirefree lingerie

Hello,

How has 2024 been for you so far? At Royce HQ we've been busy with the launch of Mia, our most versatile lounge bra yet, and are absolutely thrilled with the customer reaction to new fuller cup Cara – it's a product that's made larger-cupped women realise that wirefree can work for them, with some calling it "the best non-wired bra, ever".

Product update

This season our focus is on launching some of our best-sellers in brand new colours.

Robyn – our popular everyday bra for fuller cups will soon be available in classic black.

Posie – a best-seller in our teen/petite range, is coming out in both black and mocha. Also, due to popular demand, you will soon be able to order Posie in single packs allowing customers to mix and match colours. Pre-orders are now open.

Brand refresh

It's important to us that Royce achieves standout in the lingerie market and remains relevant to today's customer, which is why we're still working on the new look and feel for Royce Lingerie. This is a big step for us and something we want to get spot on, so it's taking a little longer than planned to make sure it's perfect. We'll be unveiling our new brand later this year, so watch this space!

New B2B website coming soon

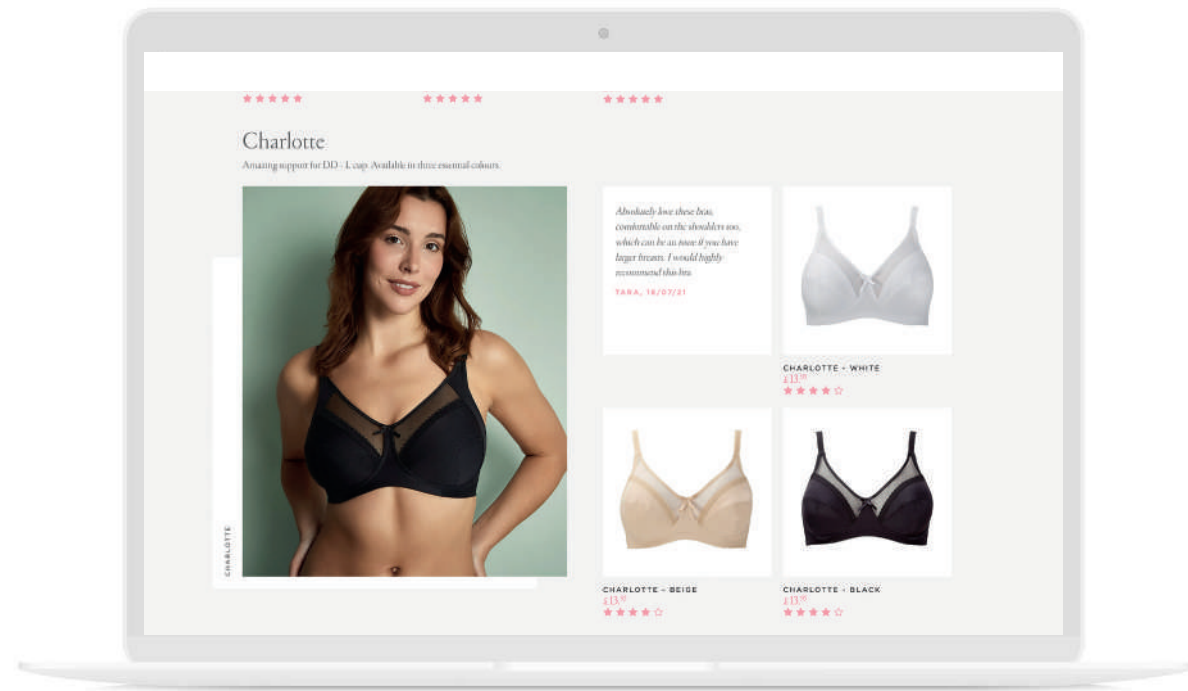
Also in the works is our new B2B website which is getting a fresh design and a more intuitive user experience to make placing online orders even easier (our wonderful trade customers will be the first to know when it's up and running).

Until then, here's to a bumper new season!

FFleming

Francesca Fleming
Commercial Director





The B2B site

Did you know that as a Royce stockist you automatically have access to our B2B site? The Trade Login section of our website is your 'one stop shop' for orders and stock check.

What you can do online:

Manage your Royce account

Update your delivery details and access past orders. Orders can also be paid for immediately and you'll receive automatic order confirmation and despatch information.

Check stock and order online

Browse Royce's full range and place orders any time of the day. You can also check stock on the B2B site, for the most up-to-date availability.

Stay in the know

Keep up-to-date with new product launches and updates.



Royce fitting courses

Royce hold two bra fitting courses throughout the year either at Royce House in Banbury or online. For more information and to book your place contact our sales team at sales@royce-lingerie.co.uk.

Wirefree

With over 30 years' experience in designing and making exclusively wirefree bras, we know how to provide the best in comfort and support for all women, from teens and beyond. Our range features exceptional bras for everyday wear, fitness and sports, post surgery, maternity and larger cup sizes.

Look inside

There are four main sections:

1. Comfort

Our core wirefree styles, many available with pockets as standard for post-surgery.

3. Nursing

All the comfort and support new mothers need during pregnancy and breastfeeding.

2. Fuller Cup

Some styles available up to an L cup with added support for fuller cup ladies. Including post-surgery options.

4. Teen/Petite

From teen and beyond, AA - D cup bras designed to support petite and small-chested bodies.

Quick reference guide

Look out for these quick reference labels to see how styles are technically made, which styles come with pockets, and those with high cotton content.

Front-fastening

Padded

Non Padded



Pocketed as standard



Pocketed option on request



Made with PIMA cotton



Organic and responsibly sourced cotton



Comfort bras

Our core wirefree styles, many available with pockets as standard for post-surgery

Padded

Comfort

Maisie

Soft padded t-shirt bra with satin trim.

Beautifully comfortable and stylish too, Maisie is a great smooth cup bra in soft fabric with satin cuff detailing and bow. With ultra comfy smooth cotton lining that can also hold a prosthesis if required.

52% MODAL,
18% COTTON,
15% POLYESTER,
9% POLYAMIDE,
6% ELASTANE

Style: 1091
Colour: Blush, Ivory, Navy,
Black and Rouge

*Best
seller*

Sizes: Blush, Ivory, Navy and Black
30 - - - D DD E F FF G
32 - B C D DD E F FF G
34 A B C D DD E F FF G
36 A B C D DD E F FF G
38 A B C D DD E F FF G
40 - B C D DD E F FF

Sizes: Rouge
32 - B C D DD E F FF G
34 A B C D DD E F FF G
36 A B C D DD E F FF G
38 A B C D DD E F FF G
40 - B C D DD E F FF





Indie

Smooth, soft t-shirt bra with lace trim.

Soft moulded cups with lace detailing around the neck edge and underband make Indie a beautiful option for an everyday wirefree bra. With cotton lining that can be used as pockets to hold a prosthesis if needed.

34% MODAL
27% POLYESTER
24% COTTON
14% POLYAMIDE
1% ELASTANE

Sizes:

32	C	D	DD	E	F	FF	G
34	C	D	DD	E	F	FF	G
36	C	D	DD	E	F	FF	G
38	C	D	DD	E	F	FF	G
40	C	D	DD	E	F	FF	G

Style: 1454
Colour: Petrol Blue, Lilac





Georgia

T-shirt bra with stretch lace.

Georgia has had a revamp. The strap bows have been removed and mesh has been added to strengthen the lace around the band and cradle. This beautiful t-shirt bra is the perfect everyday basic. With lightly padded, moulded cups, it comes with pure cotton lining/pockets as standard.

48% POLYESTER
26% COTTON
18% POLYAMIDE
8% ELASTANE

Style: 886P
Colour: Beige



Sizes:

32	-	B	C	D	DD	E	F	FF
34	A	B	C	D	DD	E	F	FF
36	A	B	C	D	DD	E	F	FF
38	A	B	C	D	DD	E	F	FF
40	A	B	C	D	DD	E	F	FF
42	A	B	C	D	DD			



Zahra

Zig zag lace design with removable modesty panel.

Zahra has modern, rounded cups which are non padded. The removable panel at the centre front offers the option of more or less coverage. The cups are lined with cotton making them super soft and can also hold a prosthesis if needed.

50% POLYAMIDE
45% COTTON
5% ELASTANE

Style: 1404
Colour: Navy

Sizes:

32	B	C	D	DD	E
34	B	C	D	DD	E
36	B	C	D	DD	E
38	B	C	D	DD	E
40	B	C	D	DD	E
42	B	C	D	DD	E





Comfi-Bra

Our best selling front fastening bra.



This super soft, front-fastening bra is designed to give superb comfort and a good shape. Made from high quality, breathable cotton with a touch of stretch, it's easy to fit, great to wear and comes with pure cotton lining/pockets as standard. Available in black, white and blush.

98% COTTON
2% ELASTANE

Style: 1010
Colour: Black

Style: 2021
Colour: Blush, White

Sizes:		
32	B/C	D/DD
34	B/C	D/DD
36	B/C	D/DD
38	B/C	D/DD
40	B/C	D/DD
42	B/C	D/DD
44	B/C	D/DD



Comfort

Silver Post surgery Bra

Bra to wear after surgery with X-static silver technology.

Our Silver Post surgery Bra has helped thousands of women recover after breast surgery. With antibacterial, thermo-regulating X-STATIC silver fibre and available in dual cup sizing to make fitting even easier.

89% POLYESTER, 8% ELASTANE,
3% X-STATIC® SILVER POLYAMIDE



Style: 1008
Colour: Beige

Contains **X-STATIC® Silver Fibre** which is proven to be:

- Antibacterial
- Anti-odour
- Thermo-regulating
- Permanent – will not wash or wear out
- 100% natural and safe

Sizes:

32	B/C	D/DD	E/F
34	B/C	D/DD	E/F
36	B/C	D/DD	E/F
38	B/C	D/DD	E/F
40	B/C	D/DD	-



Drop cup
Straps can be unfastened to allow cups to drop down for easy access to surgery areas.



Magic straps
with touch and close fastening for easy adjustment and more comfort on the shoulders.



Front-fastening
with easy opening, cushioned poppers.
Double layer cups
give added support and can be used as a pocket for a 'softie' if required.



Comfort

Eden

Organic cotton with front-fastening zip.

Eden was our first organic cotton bra and the debut style in our sustainable range. The enclosed front-fastening zip is lined; soft against the skin and smooth under clothing. The wide underband is super soft and straps are padded. Available in grey marl, Eden comes with cotton lining/pockets as standard.

87% ORGANIC COTTON
9% ELASTANE
4% POLYAMIDE

Style: 2020
Colour: Grey Marl



Sizes:

32	B/C	D/DD
34	B/C	D/DD
36	B/C	D/DD
38	B/C	D/DD
40	B/C	D/DD
42	B/C	D/DD
44	B/C	D/DD



Non padded

Non padded

Comfort



Best
seller

Grace



Best selling, high cotton content support bra.

The Royce classic, our best selling Grace bra with its supportive three part cups is adored by customers for its fabulous fit, all day comfort and high cotton content.

Sizes DD-FF have a split bottom cup to give even more shape and support.

84% COTTON
9% POLYAMIDE
7% ELASTANE

Style: 513
Colour: Black, White

Sizes: White										Sizes: Black									
32	-	-	D	DD	E	F	FF			34	B	C	D	DD	E	F	FF		
34	B	C	D	DD	E	F	FF			36	B	C	D	DD	E	F	FF		
36	B	C	D	DD	E	F	FF			38	B	C	D	DD	E	F	FF		
38	B	C	D	DD	E	F	FF			40	B	C	D	DD	E	F	FF		
40	B	C	D	DD	E	F	FF												
42	B	C	D	DD	E	F	FF												
44	B	C	D	DD	-	-	-												
46	B	C	D	DD	-	-	-												
48	B	C	D	DD	-	-	-												



Comfort

Jasmine



Classic style with cotton lining/pocket.

An absolute favourite with Royce customers, Jasmine is a classic style that is firm fitting yet supremely comfortable.

54% COTTON
43% POLYAMIDE
3% ELASTANE

Style: 423P
Colour: White, Black

Sizes: White									
34	A	B	C	D	DD	E	F	FF	
36	A	B	C	D	DD	E	F	FF	
38	A	B	C	D	DD	E	F	FF	
40	A	B	C	D	DD	E	F	FF	
42	-	B	C	D	DD	E	F	FF	
44	-	B	C	D	-	-	-	-	



A woman with long dark hair is lying on a bed with white linens, wearing a light pink, underwire bra. She is smiling and looking towards the camera. The background is a light-colored wooden headboard.

Fuller cup bras

Some styles available up to an L cup with added support for fuller cup ladies. Including post surgery options.

Non padded

Non padded

Fuller cup



Cara

Exceptional support for fuller cups

Years in the making, support bra Cara provides exceptional lift for fuller cups thanks to its ingenious design. Side slings, a firm underband and cups double-layered with cotton and mesh overlay, make this a super supportive yet lightweight bra.

56% POLYAMIDE
31% COTTON
13% ELASTANE

Style: 1461
Colour: Blush

Sizes:													
32	G	GG	H	HH	J	JJ	K	KK	L				
34	G	GG	H	HH	J	JJ	K	KK	L				
36	G	GG	H	HH	J	JJ	K	KK	L				
38	G	GG	H	HH	J	JJ	K	KK	L				
40	G	GG	H	HH	J	JJ	K	KK	L				
42	G	GG	H	HH	J	JJ	K	KK	L				



Fuller cup



Mia

Super soft organic cotton lounge bra

Made from super soft organic cotton, the fuller-cupped Mia is one of Royce's most versatile lounge-style bras to date. Designed without any fastenings or components for extra comfort. Mia's soft, wide straps and underband, plus its relaxed style makes it a great everyday bra that can also be worn at night as a sleep bra or for nursing.

79% ORGANIC COTTON
14% POLYAMIDE
7% ELASTANE

Style: 1451
Colour: Blush

Sizes:				
34	F/FF	G/GG	H/HH	J/JJ
36	F/FF	G/GG	H/HH	J/JJ
38	F/FF	G/GG	H/HH	J/JJ
40	F/FF	G/GG	H/HH	J/JJ
42	F/FF	G/GG	H/HH	J/JJ



Fuller cup

Rosa

Pretty herringbone-style animal print

This fuller-cup comfort bra features luxurious detailing including rose gold components and mesh trim across the cups. It provides full coverage and comfortable support thanks to its additional side slings. Rosa contains organic cotton and comes in a herringbone-style animal print.

45% POLYAMIDE
39% ORGANIC COTTON
16% ELASTANE

Style: 1430
Colour: Blush

Sizes:															
32	F	FF	G	GG	H	HH	J	JJ	K	KK	L				
34	F	FF	G	GG	H	HH	J	JJ	K	KK	L				
36	F	FF	G	GG	H	HH	J	JJ	K	KK	L				
38	F	FF	G	GG	H	HH	J	JJ	K	KK	L				
40	F	FF	G	GG	H	HH	J	JJ	K	KK	L				



Fuller cup

Non padded

Fuller cup



Robyn

A easy-to-wear classic

Robyn offers superb shape, lift and support for fuller cups. This update of our popular Rhianna bra features the same shape and fit but with updated embroidery detail for a lighter look. This structured, wirefree bra has been expertly designed with non padded, full-coverage cups alongside soft, wide straps to provide exceptional comfort and support for larger cup sizes.

56% COTTON
34% POLYAMIDE
5% ELASTANE
5% POLYESTER

Style: 578
Colour: White

Sizes:							
32	DD	E	F	FF	G	GG	
34	DD	E	F	FF	G	GG	
36	DD	E	F	FF	G	GG	
38	DD	E	F	FF	G	GG	
40	DD	E	F	FF	G	GG	
42	DD	E	F	FF	G	GG	
44	DD	E	F	FF	G	GG	



Coming soon

You asked, we listened! Robyn will be available in black soon.

56% COTTON
34% POLYAMIDE
5% ELASTANE
5% POLYESTER

Style: 578
Colour: Black

Sizes:							
32	DD	E	F	FF	G	GG	
34	DD	E	F	FF	G	GG	
36	DD	E	F	FF	G	GG	
38	DD	E	F	FF	G	GG	
40	DD	E	F	FF	G	GG	
42	DD	E	F	FF	G	GG	
44	DD	E	F	FF	G	GG	



Non padded

Fuller cup

Luna

Firm support for fuller cups.

Luna is the perfect everyday bra with contrasting black trims, available up to a K cup. Luna gives firm support with cotton lined cups for extra comfort.

49% POLYAMIDE, 24% COTTON,
21% POLYESTER, 6% ELASTANE

Style: 1355
Colour: Grey Marl

Sizes:	32	F	FF	G	GG	H	HH	J	JJ	K
	34	F	FF	G	GG	H	HH	J	JJ	K
	36	F	FF	G	GG	H	HH	J	JJ	K
	38	F	FF	G	GG	H	HH	J	JJ	K
	40	F	FF	G	GG	H	HH	J	JJ	K



Non padded

Fuller cup

Charlotte

Great support for fuller cups.

Fantastic, firm support, excellent comfort and a great shape makes Charlotte one of our best selling styles. With a mesh neck edge and additional side sling for extra support, Charlotte comes in four essential colours and is available all the way up to an L cup.

50% POLYAMIDE
38% COTTON
7% POLYESTER
5% ELASTANE

Style: 821
Colour: Blush, Beige, Black, White

Sizes: Black and Beige	28	DD	E	F	FF	G	GG	H	HH	J	-	-	-	-
	30	DD	E	F	FF	G	GG	H	HH	J	JJ	K	-	-
	32	DD	E	F	FF	G	GG	H	HH	J	JJ	K	-	-
	34	DD	E	F	FF	G	GG	H	HH	J	JJ	K	KK	L
	36	DD	E	F	FF	G	GG	H	HH	J	JJ	K	KK	L
	38	DD	E	F	FF	G	GG	H	HH	J	JJ	K	KK	L
	40	DD	E	F	FF	G	GG	H	HH	J	JJ	K	KK	L

Sizes: White	28	DD	E	F	FF	G	GG	H	HH	J	-	-
	30	DD	E	F	FF	G	GG	H	HH	J	JJ	K
	32	DD	E	F	FF	G	GG	H	HH	J	JJ	K
	34	DD	E	F	FF	G	GG	H	HH	J	JJ	K
	36	DD	E	F	FF	G	GG	H	HH	J	JJ	K
	38	DD	E	F	FF	G	GG	H	HH	J	JJ	K
	40	DD	E	F	FF	G	GG	H	HH	J	JJ	K

Sizes: Blush	32	E	F	FF	G	GG	H	HH	J	JJ	K	-	-
	34	E	F	FF	G	GG	H	HH	J	JJ	K	KK	L
	36	E	F	FF	G	GG	H	HH	J	JJ	K	KK	L
	38	E	F	FF	G	GG	H	HH	J	JJ	K	KK	L
	40	E	F	FF	G	GG	H	HH	J	JJ	K	KK	L



Fuller cup



Fearne

Front-fastening up to a H cup with pockets/cotton lining

Made from soft organic cotton. Fearne is a wirefree, front-fastening bra available in E – H cup. With adjustable front-fastening straps which are lightly padded to comfortably support. Fearne comes with pockets/cotton lining as standard.

62% ORGANIC COTTON	Sizes:
28% POLYESTER	
8% POLYAMIDE	
2% ELASTANE	
Style: 1425	32 E F FF G GG H
Colour: Pebble Grey	34 E F FF G GG H
	36 E F FF G GG H
	38 E F FF G GG H
	40 E F FF G GG H
	42 E F FF G GG H



Blossom

Innovative design, can be worn as a crop top

This truly innovative design can be worn as a crop top or ruched down for a plunge neckline. It is triple cup sized up to a H cup which means it supports all through the month as breasts fluctuate. With cotton lining/pockets as standard, Blossom can also be worn post surgery.

46% COTTON
39% VISCOSE
10% POLYAMIDE
5% ELASTANE

Style: 1429
Colour: Black

Sizes:			
32	C/D/DD	E/F/FF	G/GG/H
34	C/D/DD	E/F/FF	G/GG/H
36	C/D/DD	E/F/FF	G/GG/H
38	C/D/DD	E/F/FF	G/GG/H
40	C/D/DD	E/F/FF	G/GG/H
42	C/D/DD	E/F/FF	G/GG/H



Fuller cup



Non padded

Non padded

Fuller cup

Impact Free

Designed for low to medium impact sports.

A high neckline ensures full coverage of the bust to reduce vertical bounce. The underband is encased with soft cotton fabric for a comfortable fit against the skin.

100% COTTON

Style: S1149
Colour: Black

Sizes:									
32	G	GG	H	HH	J	JJ	K		
34	G	GG	H	HH	J	JJ	K		
36	G	GG	H	HH	J	JJ	K		
38	G	GG	H	HH	J	JJ	K		
40	G	GG	H	HH	J	JJ	K		



Fuller cup

Non padded

Fuller cup

Aerocool

High impact sports bra for fuller cup.

The UK's first wirefree, high impact sports bra for G-K cup sizes. Aerocool is an innovative sports bra designed to provide exceptional support for larger cup sizes. The internal side sling holds boobs in place to minimise bounce and movement and the optional racerback provides additional support.

77% POLYESTER
16% NYLON
7% ELASTANE

Style: S1382
Colour: Black

Sizes:

32	G	GG	H	HH	J	JJ	K
34	G	GG	H	HH	J	JJ	K
36	G	GG	H	HH	J	JJ	K
38	G	GG	H	HH	J	JJ	K
40	G	GG	H	HH	J	JJ	K



Non padded

Fuller cup



Nursing

Naturally wirefree and beautifully comfortable, our maternity and nursing bras are perfect for pregnancy and breastfeeding.



Non padded

Non padded

Nursing

Cara Nursing

Supportive fuller cup nursing bra

Years in the making, Cara Nursing provides exceptional support for fuller cups thanks to its ingenious design. Side slings, a firm underband and cups double-layered with cotton and mesh overlay, make this a super supportive bra. Additional retainer straps and easy-to-use clips to allow for more skin-to-skin contact when breastfeeding.

56% POLYAMIDE
31% COTTON
13% ELASTANE

Style: 1463
Colour: Blush

Sizes:												
32	G	GG	H	HH	J	JJ	K	KK	L			
34	G	GG	H	HH	J	JJ	K	KK	L			
36	G	GG	H	HH	J	JJ	K	KK	L			
38	G	GG	H	HH	J	JJ	K	KK	L			
40	G	GG	H	HH	J	JJ	K	KK	L			
42	G	GG	H	HH	J	JJ	K	KK	L			



Nursing



Best
seller

Blossom Nursing

Best selling nursing bra with innovative design

Blossom is a great everyday option. Triple cup sized to allow the bra to easily adapt to fluctuating body shapes. This clever style works in so many ways – no wonder it's our fastest selling maternity bra!

Black & White Spot:
41% VISCOSE
35% POLYAMIDE
21% COTTON
4% ELASTANE

Style: 1018
Colour: Black & White Spot

Sizes:
32 C/D/DD E/F/FF G/GG/H
34 C/D/DD E/F/FF G/GG/H
36 C/D/DD E/F/FF G/GG/H
38 C/D/DD E/F/FF G/GG/H
40 C/D/DD E/F/FF G/GG/H
42 C/D/DD E/F/FF G/GG/H

Leopard Blossom:
43% POLYESTER
27% POLYAMIDE
26% COTTON
4% ELASTANE

Style: 1456
Colour: Leopard Blossom

Sizes:
32 C/D/DD E/F/FF G/GG/H HH/J/JJ
34 C/D/DD E/F/FF G/GG/H HH/J/JJ
36 C/D/DD E/F/FF G/GG/H HH/J/JJ
38 C/D/DD E/F/FF G/GG/H HH/J/JJ
40 C/D/DD E/F/FF G/GG/H HH/J/JJ
42 C/D/DD E/F/FF G/GG/H HH/J/JJ



A truly innovative style

Totally unique, Blossom's clever design makes this bra flexible, stylish and oh-so comfortable.

Clever ruching at the centre front makes the fit and appearance adjustable – from a crop top that's perfect for sleep to a plunge style that works under lower cut tops.



Pull the cord and push the fabric to ruche in the middle.



Tie the cord to fix in place for a plunge look.



Pull and adjust fabric to ensure even finish.



Loosen cord for a crop top style that's perfect for sleep.



Maisie Nursing

Soft t-shirt nursing bra with satin trim.

With moulded foam cups and easy-to-use nursing clips, Maisie is perfect all the way through pregnancy and breastfeeding.

45% MODAL, 27% POLYESTER,
16% POLYAMIDE, 7% ELASTANE,
5% COTTON

Style: 1391
Colour: Ivory, Black
Sizes:

32	C	D	DD	E	F	FF	G
34	C	D	DD	E	F	FF	G
36	C	D	DD	E	F	FF	G
38	C	D	DD	E	F	FF	G
40	C	D	DD	E	F	FF	



Indie Nursing

Pretty lace detailing with nursing clips.

Soft moulded cups with lace detailing around the neck edge and underband makes Indie a beautiful option for an everyday nursing bra. The easy-to-use clips have retainer straps offering more skin-to-skin contact when nursing. Indie is the perfect option all the way through pregnancy and nursing.

45% MODAL, 35% POLYESTER,
19% POLYAMIDE, 1% ELASTANE

Style: 1401
Colour: Petrol Blue, Lilac

Sizes:

32	C	D	DD	E	F	FF	G
34	C	D	DD	E	F	FF	G
36	C	D	DD	E	F	FF	G
38	C	D	DD	E	F	FF	G
40	C	D	DD	E	F	FF	





Luna Nursing

Grey marl, firm support for fuller cup nursing.

Luna Nursing gives firm support, with cotton lined cups for extra comfort. With easy-to-use nursing clips and strong supportive fabric, this is an essential for nursing mums up to a K cup.

49% POLYAMIDE, 24% COTTON,
21% POLYESTER, 6% ELASTANE

Style: 1325
Colour: Grey Marl

Sizes:

32 FF G GG H HH J JJ K
34 FF G GG H HH J JJ K
36 FF G GG H HH J JJ K
38 FF G GG H HH J JJ K
40 FF G GG H HH J JJ K



Charlotte Nursing

Great support for fuller cup nursing.

Charlotte is comfortable, supportive and easy to wear up to an L cup, making it a great choice for women with a larger bust. The mesh top cup makes it stylish as well as supremely practical, and it comes with easy release drop cup clips like all Royce nursing bras.

50% POLYAMIDE
38% COTTON
7% POLYESTER
5% ELASTANE

Style: 822
Colour: Beige, Black,
Blush, White

Sizes: White

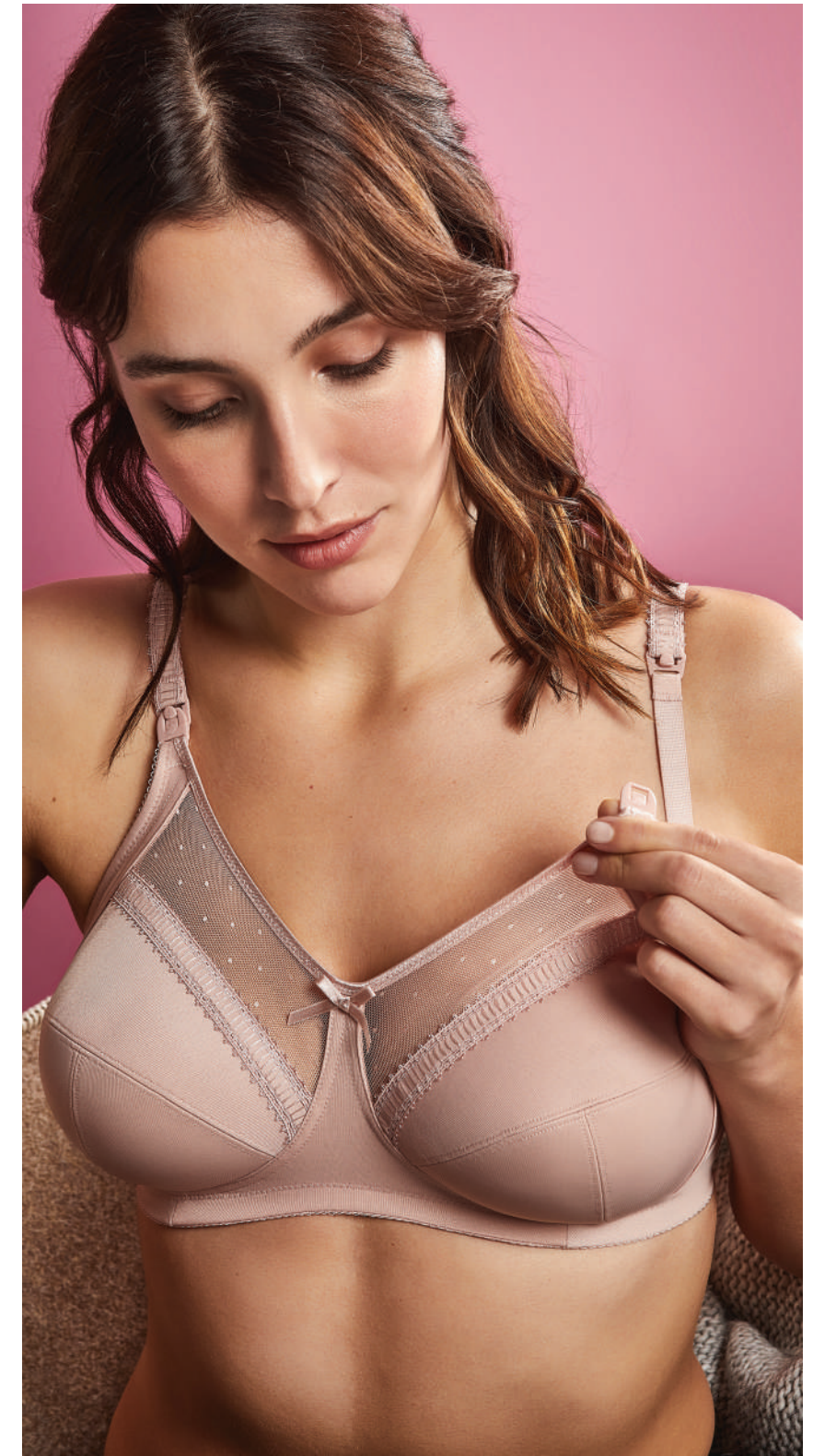
30 DD E F FF G GG H HH J JJ K
32 DD E F FF G GG H HH J JJ K
34 DD E F FF G GG H HH J JJ K
36 DD E F FF G GG H HH J JJ K
38 DD E F FF G GG H HH J JJ K
40 DD E F FF G GG H HH J JJ K

Sizes: Blush

32 E F FF G GG H HH J JJ K - -
34 E F FF G GG H HH J JJ K KK L
36 E F FF G GG H HH J JJ K KK L
38 E F FF G GG H HH J JJ K KK L
40 E F FF G GG H HH J JJ K KK L

Sizes: Black & Beige

28 DD E F FF G GG H HH J - - -
30 DD E F FF G GG H HH J JJ K - -
32 DD E F FF G GG H HH J JJ K - -
34 DD E F FF G GG H HH J JJ K KK L
36 DD E F FF G GG H HH J JJ K KK L
38 DD E F FF G GG H HH J JJ K KK L
40 DD E F FF G GG H HH J JJ K KK L



Teen/Petite Bras

From teen and beyond, AA - D cup bras designed to support flatter and small-chested bodies.





Posie

A soft wirefree t-shirt bra perfect for petite bodies. Available in A-D cup, Posie comes in a two-pack with optional racerback - great for everyday wear and sports.

55% VISCOSE
42% POLYESTER
3% ELASTANE

Style: 8019

Colour: Blush & Ivory

Sizes:

28	A	B	C	D
30	A	B	C	D
32	A	B	C	D
34	A	B	C	D
36	A	B	C	D



Coming soon

NEW colourway and single pack options coming soon.

By popular demand Posie will soon be available in single packs allowing you to mix and match colours. Pre-orders are available.

A soft wirefree t-shirt bra perfect for petite bodies. Available in A-D cup with racerback option.

55% VISCOSE
42% POLYESTER
3% ELASTANE

Style: 8031

Colour: Black, Mocha, Grey

Sizes:

28	A	B	C	D
30	A	B	C	D
32	A	B	C	D
34	A	B	C	D
36	A	B	C	D





My First Bra

My First Bra is made from pure cotton that's soft, comfortable and is non padded. This two-pack contains one plain white bra and one with a pretty pink trim.

100% COTTON

Style: 8000
Colour: White, White & Pink

Sizes:
30 AA A B
32 AA A B
34 AA A B
36 AA A B



Lola

Lola is an athleisure-style, crop top bra. It features a racerback, wide underband and double-layered fabric, with high cotton content, for excellent support. Available in dual cup sizing, Lola can also be added to a gym kit as a low impact sports bra.

95% COTTON, 5% ELASTANE

Style: 8023
Colour: Peach & White

Sizes:
28 AA/A B/C D/DD
30 AA/A B/C D/DD
32 AA/A B/C D/DD
34 AA/A B/C D/DD
36 AA/A B/C D/DD



Impact Free Adjustable Fit

Designed specifically for the smaller frame with an adjustable racerback. This sports bra offers good support and excellent comfort for all activities. It's discreet enough to wear under school uniform too. With removable foam pads in the cups for modesty.

54% POLYESTER
44% COTTON
2% ELASTANE

Style: S8020
Colour: White,

Sizes:
30 A B C D
32 A B C D
34 A B C D
36 A B C D
38 A B C



Size conversion charts

Band size conversion chart

UK (Royce)	USA	European	Italy	Australia
28	28	60	-	6
30	30	65	0	8
32	32	70	1	10
34	34	75	2	12
36	36	80	3	14
38	38	85	4	16
40	40	90	5	18
42	42	95	6	20
44	44	100	7	22
46	46	105	-	24
48	48	110	-	26

Cup size conversion chart

UK (Royce)	USA	European	Italy	Australia
AAA	-	-	-	-
AA	AA	AA	AA	-
A	A	A	A	A
B	B	B	B	B
C	C	C	C	C
D	D	D	D	D
DD	DD/E	E	E	DD
E	DDD/F	F	F	E
F	G	-	-	F
FF	H	-	-	FF
G	I	-	-	G
GG	J	-	-	GG
H	K	-	-	H
HH	L	-	-	HH
J	M	-	-	J
JJ	N	-	-	JJ
K	O	-	-	K
KK	-	-	-	-
L	-	-	-	-

Royce Lingerie Limited
tel +44 (0) 1295 265557 | email sales@royce-lingerie.co.uk
royce-lingerie.co.uk/login-trade





Royce Lingerie Limited

Royce House, Canada Close, Banbury, Oxfordshire OX16 2RT

tel +44 (0) 1295 265557 | email sales@royce-lingerie.co.uk

royce-lingerie.co.uk/login-trade



This brochure was made using vegetable based inks and is carbon balanced